

Marine Birds – Gadwall Winter Surveys

description

This atlas page illustrates the best available data that identifies Gadwall winter habitat, which falls within the months of December through to February. The Gadwall (*Anas strepera*) is a medium sized duck with a brown head and a black and brown mottled body. Gadwalls feed on plant material, and can be found in marsh, lake and pond habitats. They migrate short distances, and in some areas are permanent residents.

Source data used to develop this map primarily consisted of shoreline-based surveys, which were focused on identifying, counting and recording marine birds. The surveys were collected at sites with defined boundaries and areas.

Observations of the listed species were totalled for each survey location and divided by the area surveyed to generate a density value for each survey location. The densities of all of the survey locations within a single planning unit were averaged and adjusted for survey effort to calculate the illustrated metric, average density of Gadwall in the winter by planning unit. The values were then classified and symbolized using 5 quantiles, meaning that each class consisted of 20% of the non-zero planning units. (A quantile is established by dividing the frequency distribution of a variable into equal groups: that is, each quantile contains the same fraction of the total number of values being measured.)



PHOTO: LEN BILUMIN

data sources

- Environment Canada (Canadian Wildlife Service) – Burrard Inlet Environmental Action Plan: Winter Bird Surveys
- Bird Studies Canada - BC Coastal Waterbird Survey

data resolution

- Weighted averages were calculated for each 2 kilometre x 2 kilometre planning unit.

data collected

- 1999-2008

date compiled

- 2010

reviewers

- Peter Davidson, Bird Studies Canada
- James Kenyon, Ducks Unlimited Canada
- Representatives from Environment Canada, Canadian Wildlife Service

reviewer comments

- None provided.

caveats of use

- Survey effort is not consistent across all planning units, across all areas of the coast or across all seasons. Areas with no data may not have been surveyed and these data gaps are not necessarily indicative of an absence of Gadwall.
- The density values in an area can change over time in response to natural population fluctuations and changes in habitat conditions (natural or anthropogenic).
- The precision of the average density values displayed in the legend is not indicative of the original precision of the survey counts.
- This feature is a compilation of data collected by many people, for different purposes, using different survey techniques with different methodologies within each technique and, therefore, considerable care must be taken when using the data.
- Surveys performed in different seasons will produce different results.
- Recommended date of expiry for use of these data in a marine planning context: None provided.

map, feature data and metadata access

- Visit www.bcmca.ca/data for more information.

references

Species description contains material from:

- B.C. Conservation Data Centre. *Species Summary: Anas strepera*. BC Ministry of Environment (MoE) 2010. 21 Sep. 2010 <http://a100.gov.bc.ca/pub/eswp/>
- Seattle Audubon Society. *BirdWeb – Seattle Audubon's Guide to the Birds of Washington*. Revised 2008. www.seattleaudubon.org/birdweb

BCMCA Atlas
Marine Birds
Gadwall Winter Surveys

Legend

Birds per square kilometre standardized by effort

- 0.01 - 0.04
- 0.05 - 0.18
- 0.19 - 1.55
- 1.56 - 2.88
- 2.89 - 19.62

Note:
 - Classification based on 5 quantiles.

Data Sources:

Environment Canada
 (Canadian Wildlife Service),
 Bird Studies Canada

Base Data:

ESRI Base Data, GeoBase, GeoBC,
 NOAA, Natural Resources Canada,
 USGS, Washington State Government

Thematic Data:

For more information on data sources
 and methods please refer to the
 facing page to this map

Projection: BC Albers NAD83

0 25 50 75 100 125 150

Kilometres

0 25 50 75

Nautical Miles

1:4,250,000 *

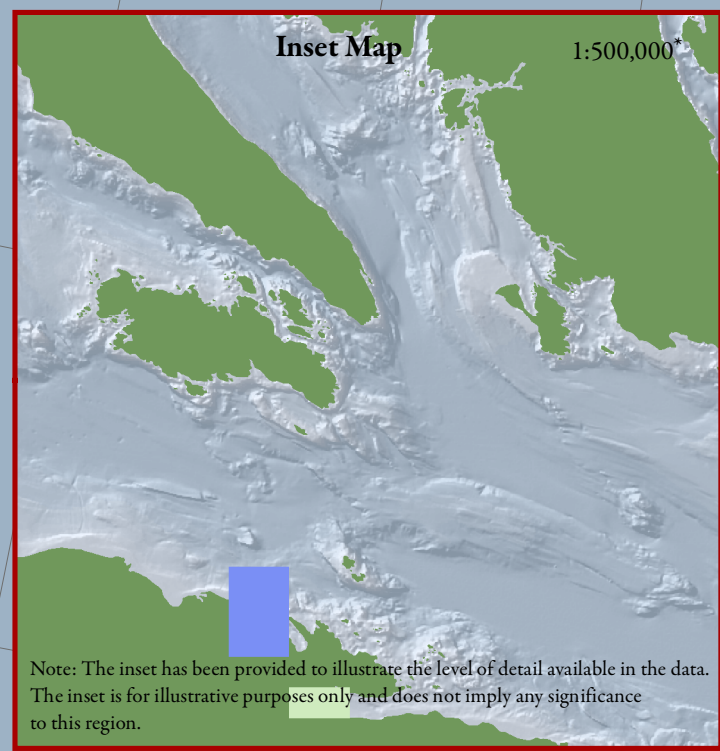
* Written scales are approximate and
 are based on a 11 x 17 inch paper size.

Prepared for:



Map template by Caslys Consulting Ltd.

August 27, 2010



Note: The inset has been provided to illustrate the level of detail available in the data. The inset is for illustrative purposes only and does not imply any significance to this region.