



Sport Fishing - Feature Count

description

One of the goals of BC Marine Conservation Analysis (BCMCA) is to collaboratively identify marine areas of high conservation value and areas important to human use in Canada's Pacific Ocean, and to make these products available for use in marine planning. In order to identify areas important to human use the BCMCA ran individual Marxan analyses for each of six sectors of marine use (commercial fishing, ocean energy, shipping and transport, sport fishing, tenures and recreation and tourism). The features used in these analyses are illustrated in the [Marine Atlas of Pacific Canada](#) and represent where and how each sector uses the marine resources of the Canadian Pacific.

Sport fishing in the tidal waters of British Columbia, which has taken place since the first Western European settlers arrived, is an important social activity, especially in small coastal communities. BC Stats (2007) estimated that in 2005 the tidal sport fishery in BC generated \$467 million in direct economic output, \$135 million in GDP, \$88.9 million in employment income and 4,200 full-time equivalent employees. Sport fishing is as much about the overall experience as it is about the actual catch, hence the sport fishing maps portray where effort is expended, not necessarily where fish are caught. The information reflects both independent and guided participation.

This map was generated by overlaying all the sport fishing features that the BCMCA collated to go into the Marxan analysis. The map illustrates the number of different sport fishing features that inform each 2 kilometre by 2 kilometre planning unit. There were a total of 4 sport fishing features used in the Marxan analysis. As the facing map shows, all 4 of them overlapped in some of the planning units.

Four sport fishing features were included in this tally:

- Anadromous Fish
- Crab
- Groundfish
- Prawn and Shrimp

data sources

- Fisheries and Oceans Canada, Crab Fishery Distribution on the North Coast 2007, updated by BC Marine Conservation Analysis (BCMCA) with local knowledge
- Parks Canada
- Province of British Columbia, Coastal Resource Information Management System (CRIMS), updated by the BC Marine Conservation Analysis (BCMCA) with local knowledge

(Note: Please see individual feature atlas pages and/or metadata for feature specific data sources.)

data resolution

- Features were tallied by their presence in 2 kilometre by 2 kilometre planning units.

date compiled

- 2010

reviewers

- Not reviewed.

reviewer comments

- None provided.

caveats of use

- Please see individual feature atlas pages and metadata for feature or sport fishing specific caveats.
- The feature data were collected anecdotally at local SFAB meetings and have not been independently verified. Some areas that have been fished may not have been identified, and the data do not provide a metric of intensity of use, economic value, or social value. The data illustrate past use areas and may not reflect current or future reality. Fishing areas change with climate and over time.
- Recommended date of expiry for use of these data in a Marine Planning context: Between 2012 and 2014.

map, feature data and metadata access

- Visit www.bcmca.ca/data for more information.

references

- BC Stats. *British Columbia Fisheries and Aquaculture*. Prepared for the BC Ministry of Environment. 2007. www.env.gov.bc.ca/omfd/reports/BC-Fisheries-Aquaculture-Sector-2007.pdf

BCMCA Atlas

Sport Fishing

Feature Count

Legend

Feature count
(by planning unit)

- 1
- 2
- 3
- 4

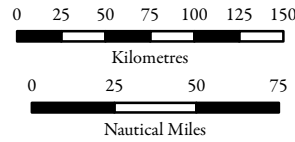
Note:
- Classification based on 4 quantiles.

Data Sources:
BCMCA, Parks Canada,
Province of British Columbia

Base Data:
ESRI Base Data, GeoBase, GeoBC,
NOAA, Natural Resources Canada,
USGS, Washington State Government

Thematic Data:
For more information on data sources
and methods please refer to the
facing page to this map

Projection: BC Albers NAD83



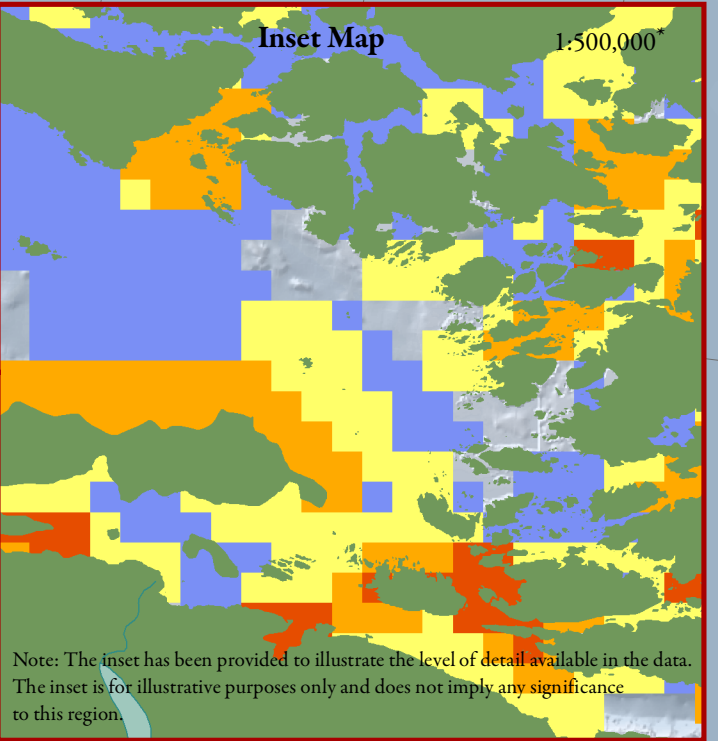
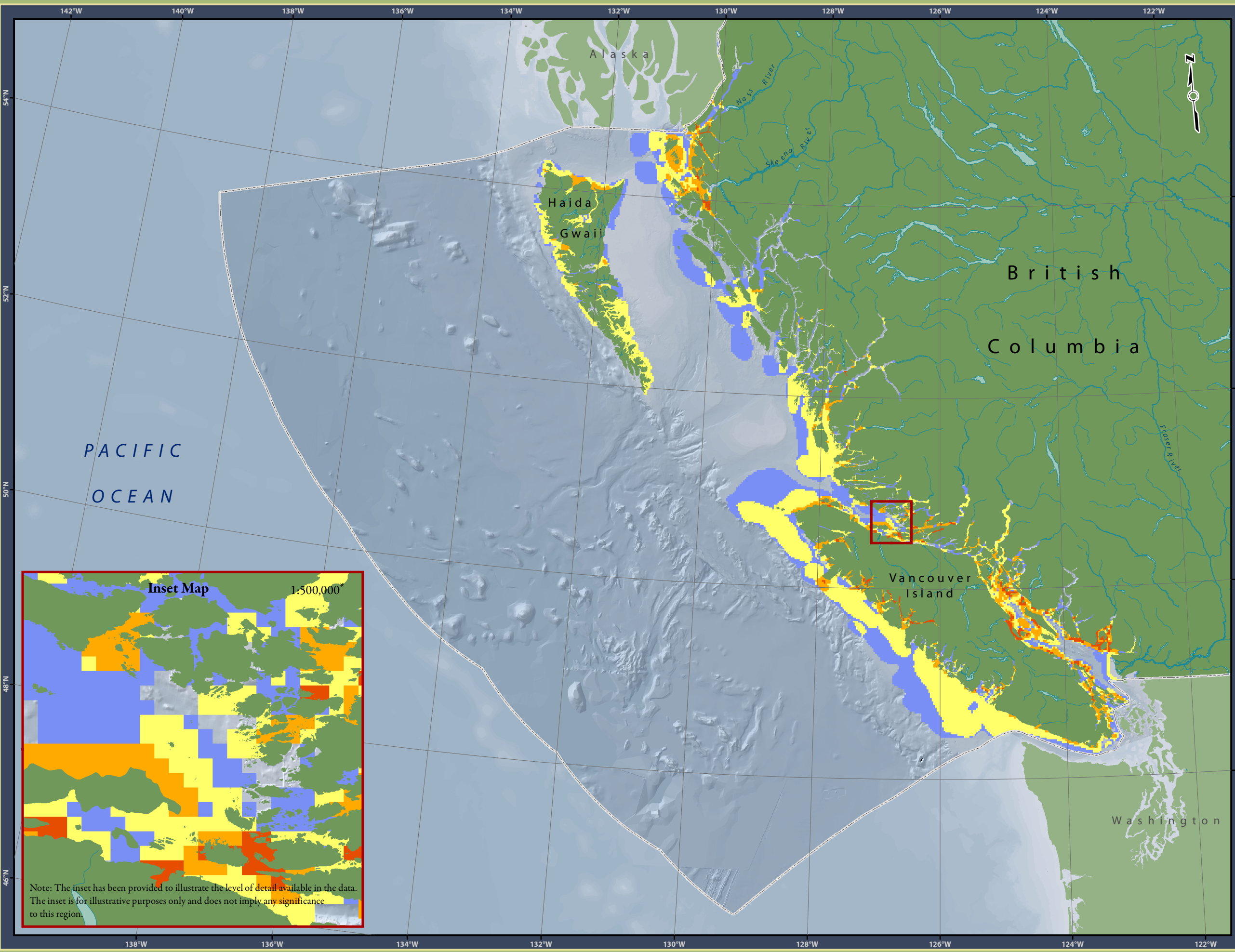
1:4,250,000 *

* Written scales are approximate and
are based on a 11 x 17 inch paper size.

Prepared for:



Map template by Caslys Consulting Ltd.
February 3, 2011



Note: The inset has been provided to illustrate the level of detail available in the data. The inset is for illustrative purposes only and does not imply any significance to this region.