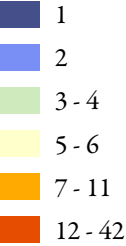


BCMCA Atlas  
Marine Birds  
Feature Count

Legend

Feature count  
(by planning unit)



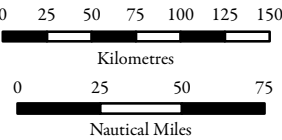
Note:  
- Classification based on 6 quantiles.

**Data Sources:**  
Alan Burger,  
Bernard Schroeder,  
Bird Studies Canada,  
British Columbia Breeding Bird Atlas,  
British Columbia Conservation Data Centre,  
Capital Regional District,  
Environment Canada  
(Canadian Wildlife Service),  
Laskeek Bay Conservation Society,  
Parks Canada,  
Raincoast Conservation Foundation

**Base Data:**  
ESRI Base Data, GeoBase, GeoBC,  
NOAA, Natural Resources Canada,  
USGS, Washington State Government

**Thematic Data:**  
For more information on data sources  
and methods please refer to the  
facing page to this map

**Projection:** BC Albers NAD83



1:4,250,000 \*

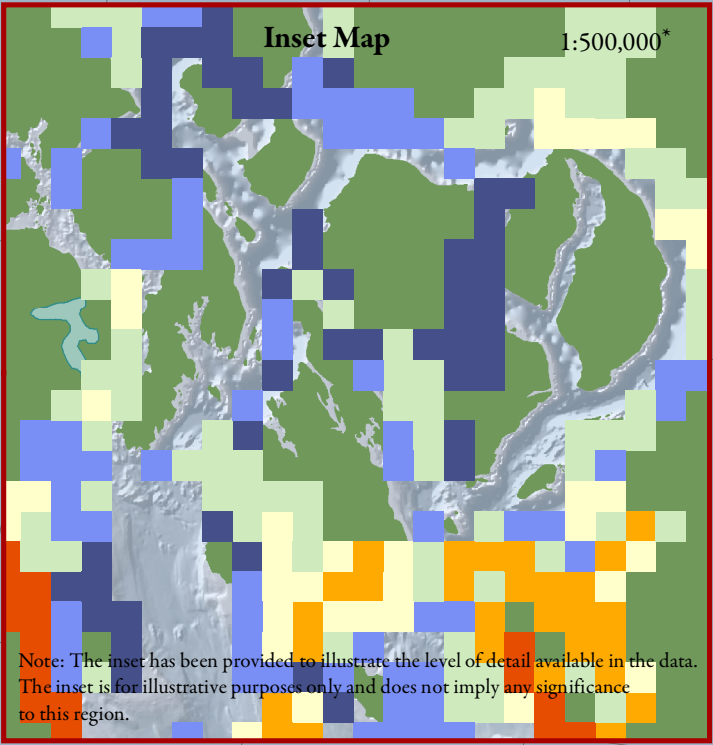
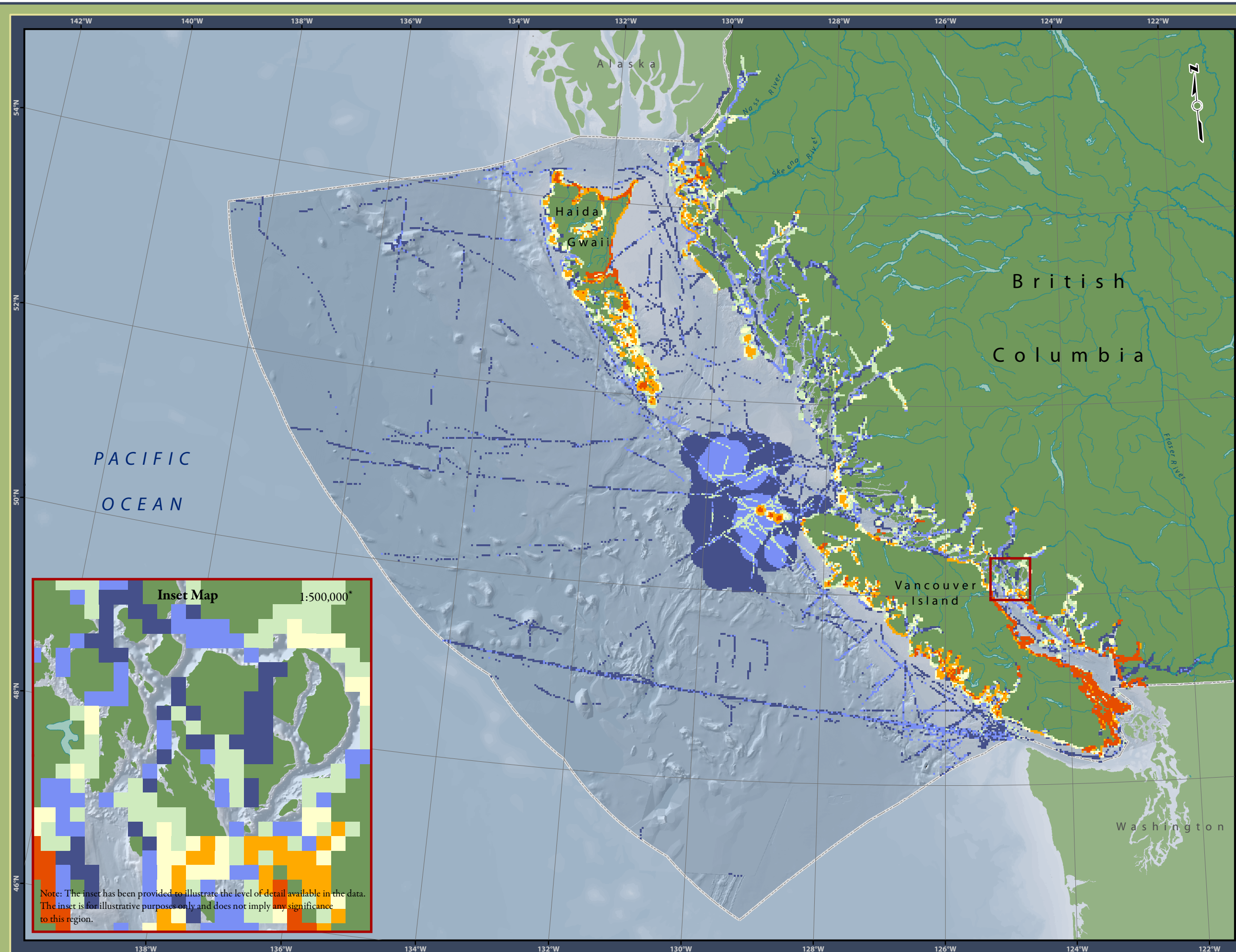
\* Written scales are approximate and  
are based on a 11 x 17 inch paper size.

Prepared for:



Map template by Caslys Consulting Ltd.

September 13, 2010



Note: The inset has been provided to illustrate the level of detail available in the data.  
The inset is for illustrative purposes only and does not imply any significance  
to this region.