

## Human Use – Reported Pollutant Spills (2006 to 2012)

### description

Pollutant spills into marine waterways can have a devastating impact on ecosystems and can represent a substantial cost to local economies. The Canadian Coast Guard (CCG) is responsible for ensuring the cleanup of ship-sourced spills of oil and other pollutants into Canadian waters. Canadian law holds polluters responsible for costs associated with cleaning up spills, including CCG's costs for monitoring and/or managing a response effort.

This map displays the recorded locations of 3,577 pollutant spills reported to the Canadian Coast Guard (CCG) from 2006 to 2012. Pollutants are defined by the Canadian Government as:

*“Any substance that, if added to any waters, would degrade the quality of those waters to an extent that is detrimental to their use by humans or by any animal, fish or plant that is useful to humans.” (Canada Shipping Act, 2001, Part 8).*

The type of pollutant associated with each reported spill location was not provided to BCMCA. However, the most common type of spill is fuel and/or oil. Spill quantity was not provided to BCMCA nor was the expected area of affect. However, there's no minimum spill amount that requires notification and spills are reported regardless of size. The spill locations displayed on the map range in volume from 0.01 litres and up.

Spill locations were recorded accurately from 2006 onward. Prior to 2006, coordinates were generally not recorded and the given descriptions are not specific enough to accurately determine spill location. For this reason, spills prior to 2006 are not displayed on the map.

Spill locations are separated into three categories: Land Spills, Ship Spills and Unknown Land or Sea Spills. These categories indicate the origin of the spill as reported to the Canadian Coast Guard. Land spills cover marinas, terminals, coastal fuel/oil facilities and wharfs. The ship spills category captures all reported spills from ships. The unknown category captures those spills on land or sea where the origin was not reported.



BC MINISTRY OF ENVIRONMENT

### data sources

- Pollutant Spills: Canadian Coast Guard

### data resolution

- None provided

### date collected

- 2006-2012

### date compiled

- 2012

### reviewers

- None

### reviewer comments

- None provided.

### caveats of use

- Recommended date of expiry for use of these data in a Marine Planning Context: None provided

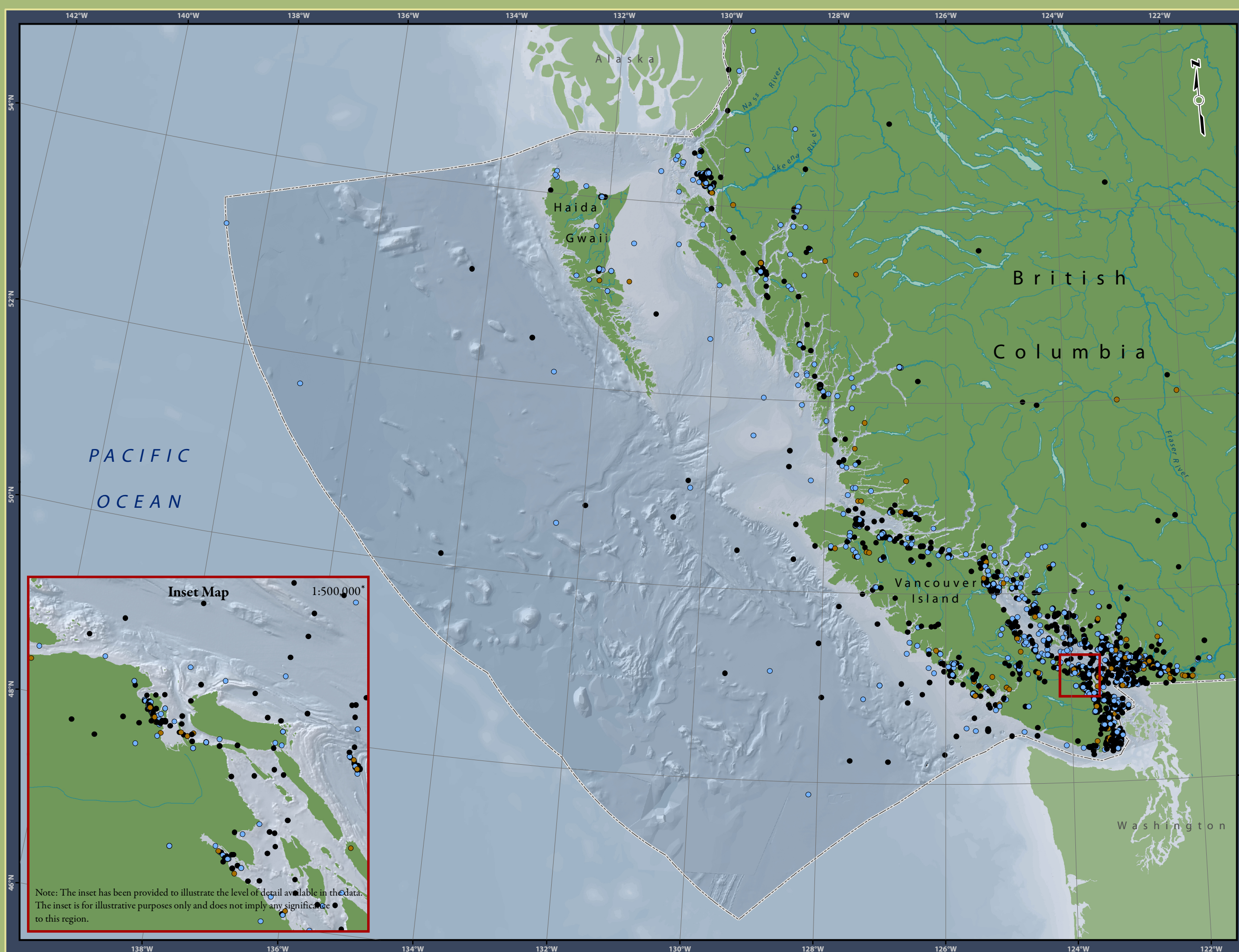
### map, feature data and metadata access

- Visit [www.bcmca.ca/data](http://www.bcmca.ca/data) for more information.

### references

- Canadian Coast Guard. 2013. Environmental Response Program: [www.ccg-gcc.gc.ca/eng/CCG/Environmental\\_Response](http://www.ccg-gcc.gc.ca/eng/CCG/Environmental_Response)
- The Government of Canada. 2013. Canada Shipping Act, 2001, Part 8: <http://laws-lois.justice.gc.ca/eng/acts/C-10.15/page-47.html#b-98>





**BCMCA Atlas**  
**Human Use**  
**Reported Pollutant Spills**

**Legend**

- Land Spill
- Ship Spill
- Unknown Land or Sea Spill

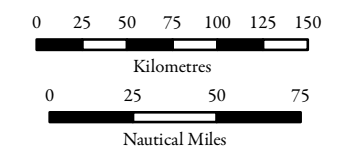
Note:  
- Spills recorded between 2006 and 2012.  
- Not all spills are considered "marine" (i.e., some occur along interior waterways and lakes).

**Data Sources:**  
Canadian Coast Guard

**Base Data:**  
ESRI Base Data, GeoBase, GeoBC,  
NOAA, Natural Resources Canada,  
USGS, Washington State Government

**Thematic Data:**  
For more information on data sources  
and methods please refer to the  
facing page to this map

**Projection:** BC Albers NAD83



1:4,250,000 \*

\* Written scales are approximate and  
are based on a 11 x 17 inch paper size.

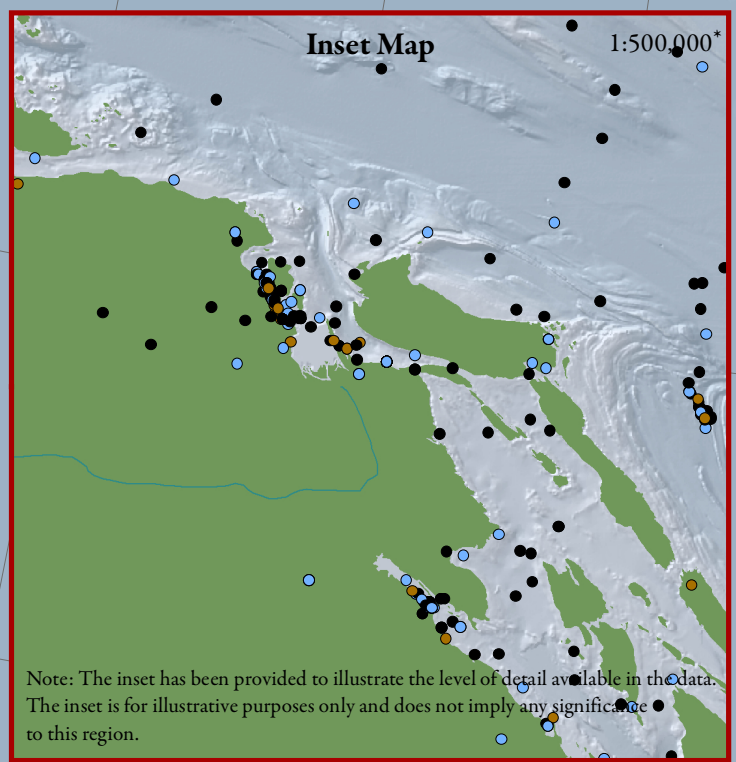
Prepared for:



Map template by Caslys Consulting Ltd.  
May 13, 2013

**Inset Map**

1:500,000\*



Note: The inset has been provided to illustrate the level of detail available in the data.  
The inset is for illustrative purposes only and does not imply any significance  
to this region.