

## Tenures – Log Handling & Storage

### description

The management of Crown land and coastal and marine resources plays a pivotal role in expanding and diversifying the economy, sustaining the environment, and fostering the health and well-being of residents and communities in British Columbia. Crown land is typically, and most commonly, referenced in regards to the province's terrestrial land base, and constitutes 94% of that land base, but it also applies to submerged lands (i.e., those lands covered by water) including tidal lands (i.e., the shoreline). Provincial Crown land includes the seabed floor of inland waters whereas the Federal Crown land extends over the seabed floor in offshore areas, as well as in designated ports and federal protected areas. The federal and provincial governments have not agreed where to place the boundary between inland and offshore areas, although there are agreements regarding jurisdiction in some areas (e.g., Strait of Georgia).

The tenure map series depicts provincial tenures only. Provincial agencies issue tenures for a variety of uses that may include everything from marine-based renewable energy development to commercial tenures for guide outfitters.

This atlas page depicts Crown land allocated for log handling and storage in the coastal and marine areas of BC as of October 2012. Uses of these Crown land areas are directly associated with aquatic log sorts, and include, without limitations: log storage and holding areas, jackladders, feeder pockets, hot ponds, wharves and floats, float-camp sites, pilings and areas of fill directly associated with those facilities. Sites are distributed strategically throughout the province in association with upland logging activities. Both active land allocations and applications provided in the data from the provincial Land and Resource Data Warehouse are shown.

Forms of land allocation vary in the rights they grant and length of time they are typically issued for (see Crown Land allocation policy reference below). The types and number of land allocations related to log handling and storage are detailed in Table 1.

Land Allocation Type		Number Issued
Tenure	licence of occupation	430
	lease	255
	temporary permit	22
Reserves, withdrawals and transfers	designated use area	135
	map reserve	34
	notation of interest	24
	transfer of administration	5

TABLE 1. CROWN LAND ALLOCATION RELATED TO LOG HANDLING AND STORAGE



PHOTO: DAVE TRIM,  
WESTERN FOREST PRODUCTS



PHOTO: KW LADELL

### data sources

- Province of British Columbia, Integrated Land Management Bureau

### data resolution

- 1:20,000

### date compiled

- October 2012

### reviewers

- Coast Forest Products Association
- Western Forest Products Inc

### reviewer comments

- Log dumps do not consume marine resources, they facilitate the movement of terrestrial values (timber resource).
- The forest sector utilizes log dumps (interface of marine and terrestrial environments) and log storage areas, many of which are temporary. With respect to log dumps where Fisheries and Oceans Canada (DFO) determines that a harmful alteration, disruption or destruction of fisheries habitat (HADD) is unavoidable the proponent is required to compensate for the potentially lost habitat (zero net loss of habitat principle) before the construction of the log dump is approved.

### caveats of use

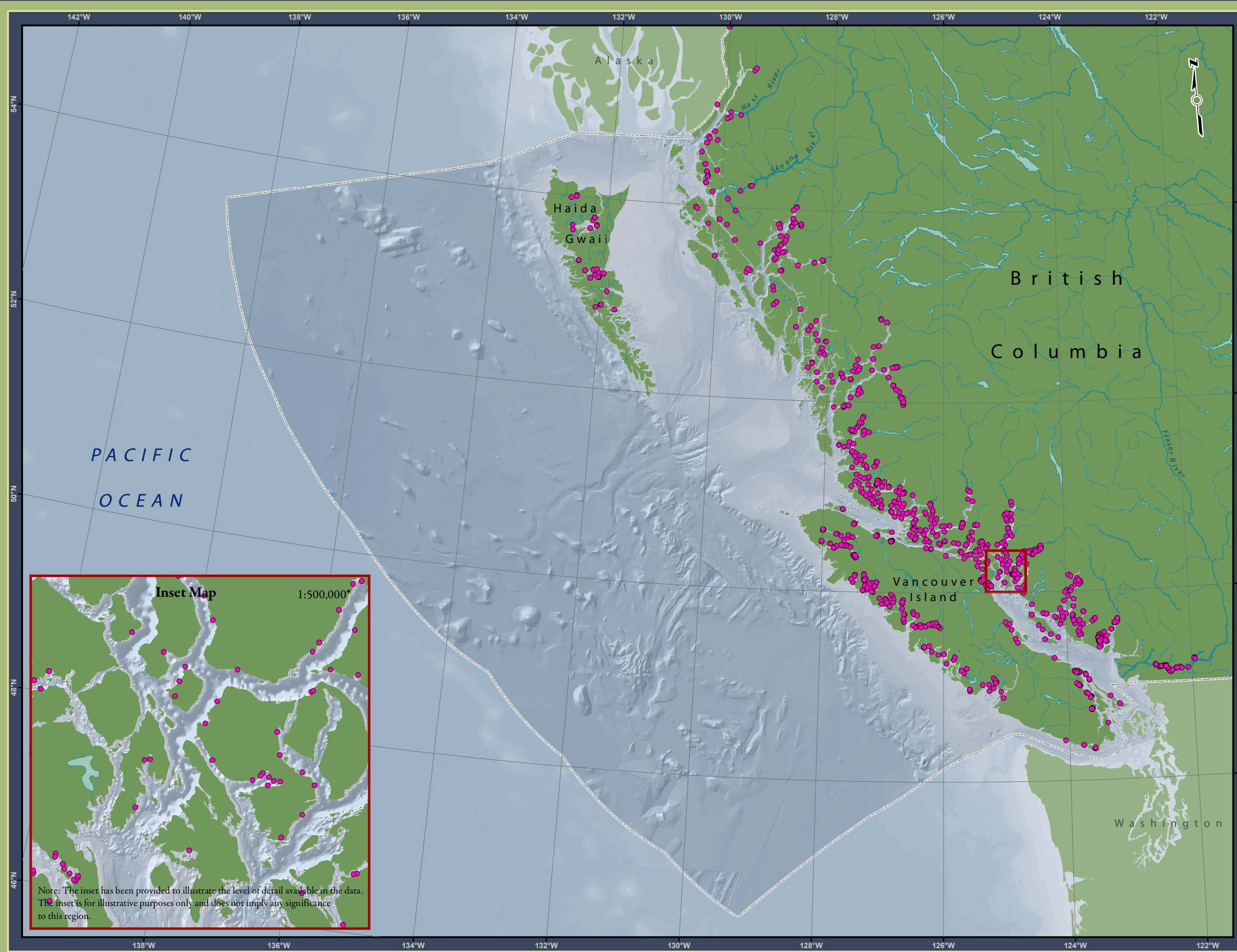
- Tenures and other Crown land allocations are issued and expire over time; the latest release of this data from the BC Land and Resource Data Warehouse should be gathered before use.
- Crown land allocations are displayed as points on the accompanying map. Data was provided as polygons. The footprints of the tenures from the source polygons are too small to be visible at the scale of mapping used.
- Recommended date of expiry for use of these data in a marine planning context: None provided.

### map, feature data and metadata access

- Visit [www.bcmca.ca/data](http://www.bcmca.ca/data) for more information.

### references

- Crown Land Allocation policy is available at: [www.al.gov.bc.ca/clad/leg\\_policies/policies/crown\\_land\\_allocation.pdf](http://www.al.gov.bc.ca/clad/leg_policies/policies/crown_land_allocation.pdf)
- Information on provincial tenures issued for log handling is available at: [www.agf.gov.bc.ca/clad/tenure\\_programs/programs/loghandling/index.html](http://www.agf.gov.bc.ca/clad/tenure_programs/programs/loghandling/index.html)



**BCMCA Atlas**

**Tenures  
Log Handling & Storage**

**Legend**

- 2012 Tenures**
- Log Handling & Storage

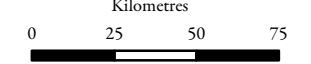
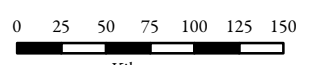
Note:  
- Tenures change over time. These tenures are current as of October 2012.

**Data Sources:**  
Province of British Columbia

**Base Data:**  
ESRI Base Data, GeoBase, GeoBC, NOAA, Natural Resources Canada, USGS, Washington State Government

**Thematic Data:**  
For more information on data sources and methods please refer to the facing page to this map

**Projection:** BC Albers NAD83



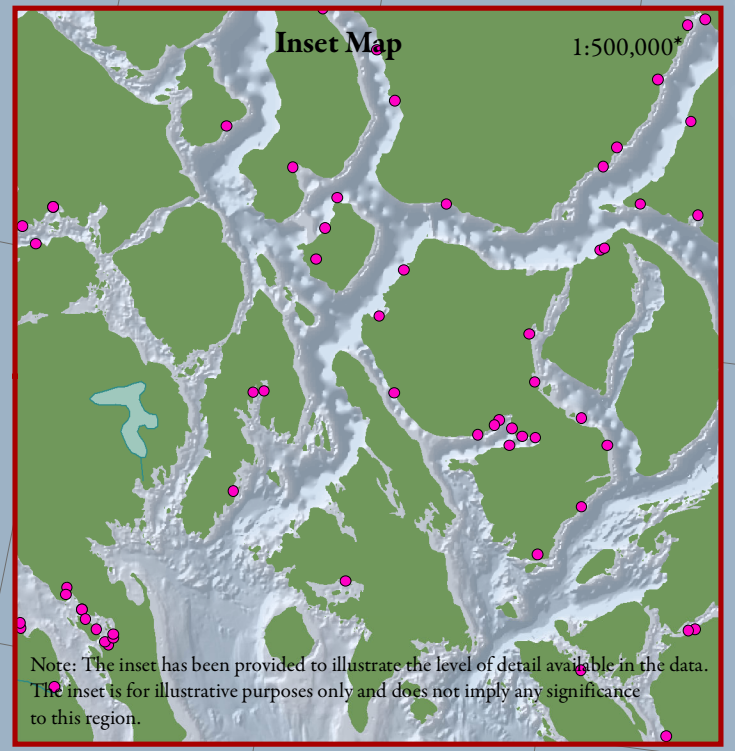
1:4,250,000 \*

\* Written scales are approximate and are based on a 11 x 17 inch paper size.

Prepared for:



Map template by Caslys Consulting Ltd.  
December 4, 2012



Note: The inset has been provided to illustrate the level of detail available in the data. The inset is for illustrative purposes only and does not imply any significance to this region.