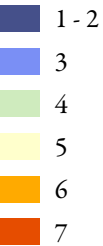


BCMCA Atlas
Physical Representation
Feature Count

Legend

Feature Count
(by planning unit)



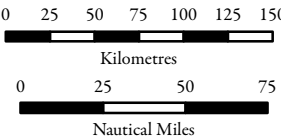
Note:
- Classification based on 6 quantiles.

Data Sources:
Baja California to the Bering Sea (B2B) study,
Fisheries and Oceans Canada,
InterRidge,
Living Oceans Society,
Marine Geoscience Data System,
Natural Resources Canada,
Parks Canada,
Province of British Columbia,
Seamounts Online

Base Data:
ESRI Base Data, GeoBase, GeoBC,
NOAA, Natural Resources Canada,
USGS, Washington State Government

Thematic Data:
For more information on data sources
and methods please refer to the
facing page to this map

Projection: BC Albers NAD83



1:4,250,000 *

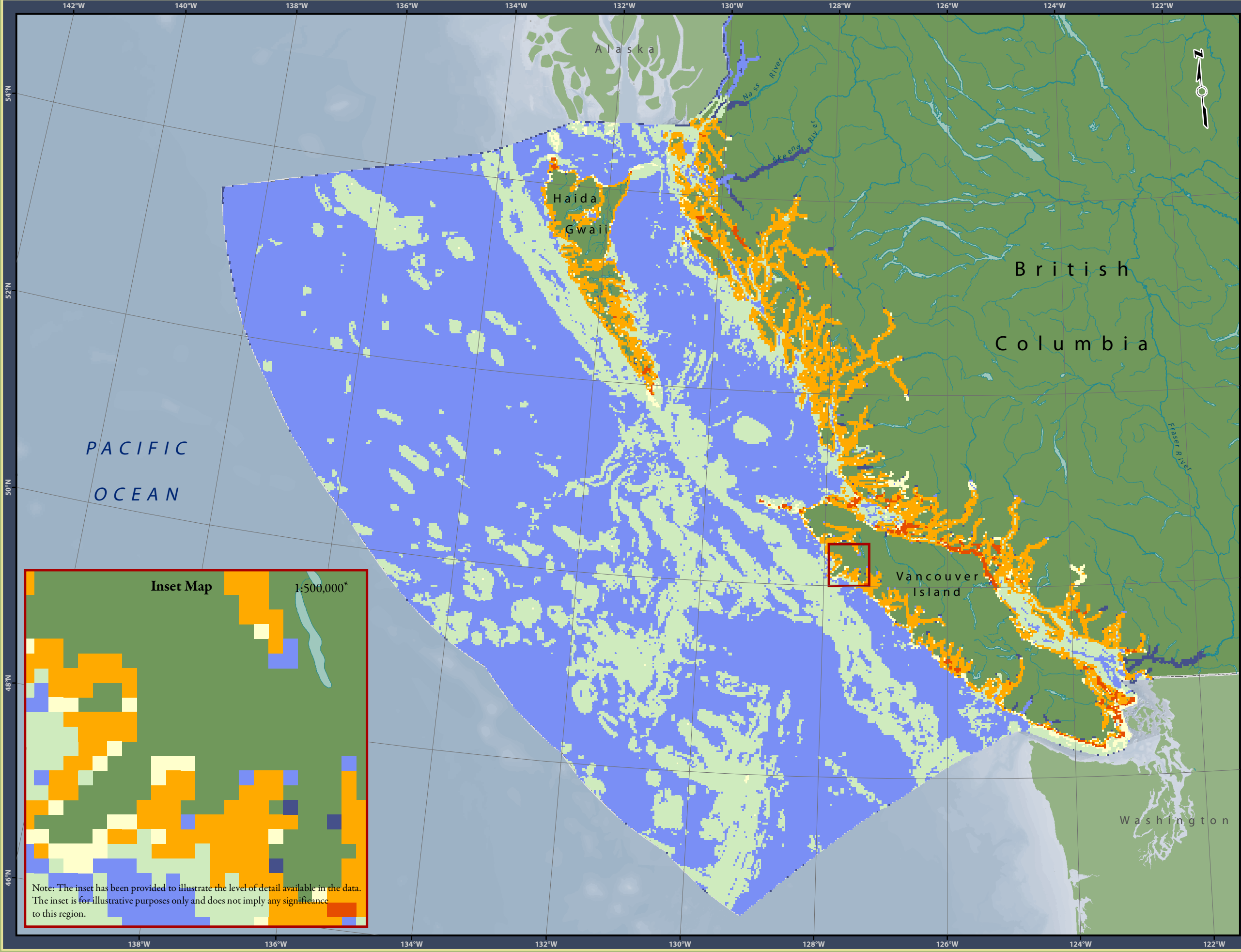
* Written scales are approximate and
are based on a 11 x 17 inch paper size.

Prepared for:



Map template by Caslys Consulting Ltd.

September 13, 2010



Note: The inset has been provided to illustrate the level of detail available in the data.
The inset is for illustrative purposes only and does not imply any significance
to this region.