

Ocean Energy – Renewable Energy Tenures and Transmission Line Tenures

description

Renewable energy, often called green or clean energy, refers to power generation from non-conventional, renewable sources that have the potential to provide power with a lower environmental and climate change impact. This map shows the location of tenures issued for two renewable energy types: ocean energy (wave and tidal) and wind energy. Ocean energy refers to the energy that can be harnessed from the ocean's tides, currents and waves. Wind energy is turned into electrical power through wind turbines (onshore and offshore) capturing winds blowing across the earth's surface.

Development of renewable energy opportunities on Crown land, including submerged land, requires a tenure issued by the Province of British Columbia. Two types of tenures have been issued for renewable energy in the marine realm. Investigative permits allow the grantees to carry out specified activities related to investigating project feasibility for a short term (under 2 years) without the construction of improvements on the land. Licences of Occupation are provided for actual instalment of investigative technical equipment.

This map additionally shows electrical power line and transmission line tenures issued to support the distribution of power from all sources of energy (traditional and renewable). The distinction between power and transmission lines is that the former is issued for utilities while the later is issued for the transmission of power from waterpower generation projects.

Tenures that overlap the marine realm are displayed in colour, while the outlines of tenures issued for power or transmission lines and wind generation on land are shown as grey outlines to provide context for the renewable energy tenures that extend over the marine.



data sources

- Province of British Columbia, Integrated Land Management Bureau

data resolution

- 1:20,000

date compiled

- October 2012

reviewers

An earlier version of this atlas page was reviewed by:

- Jessica McIlroy, Ocean Renewable Energy Group

reviewer comments

- The map should be verified against current tenure data from the Provincial Land and Resource Data Warehouse and up-to-date resource information found online at the Ocean Renewable Energy Group.

caveats of use

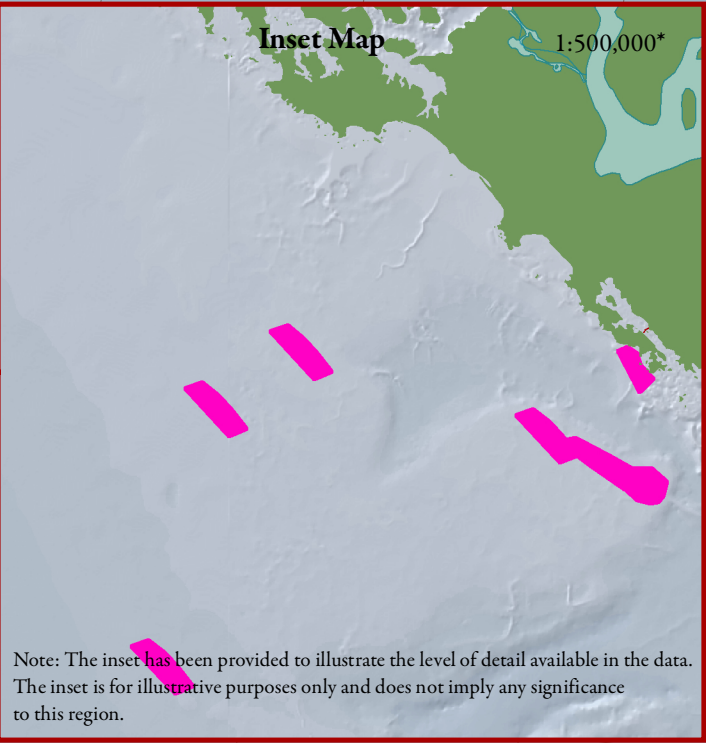
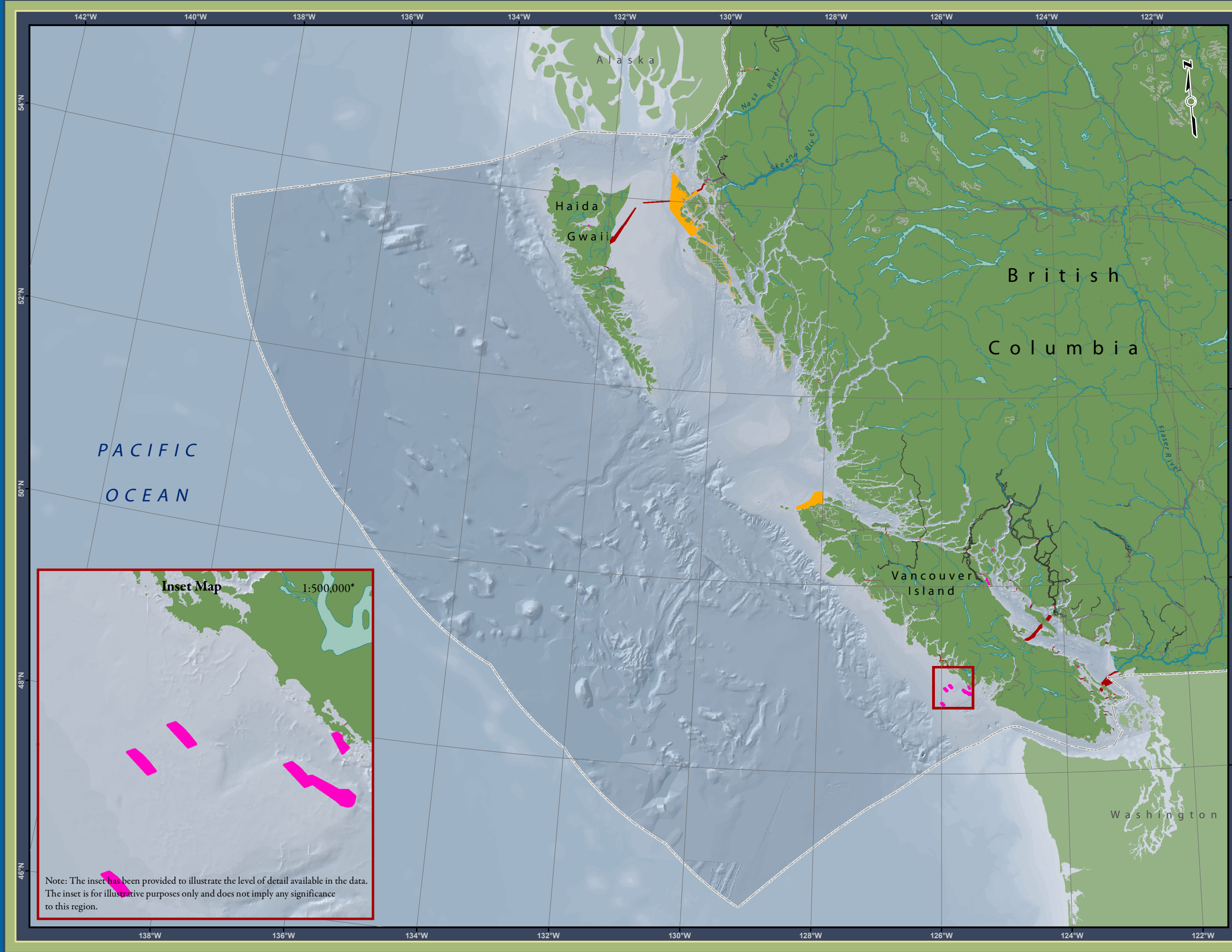
- Tenures and other Crown land allocations are issued and expire over time – the latest release of this data from the BC Land and Resource Data Warehouse should be gathered before use.
- Recommended date of expiry for use of these data in a marine planning context: 2015, although information should be verified against up-to-date information available through the Provincial Land and Resource Data Warehouse and Ocean Renewable Energy Group.

map, feature data and metadata access

- Visit www.bcmca.ca/data for more information.

references

- Crown Land Allocation policy can be found at: www.al.gov.bc.ca/clad/leg_policies/policies/crown_land_allocation.pdf
- Information on provincial tenures issued for alternative ocean energy purposes can be found at: www.empr.gov.bc.ca/SiteCollectionDocuments/Ocean_Energy_Policy_Directive_June_07.pdf
- Information on provincial tenures issued for wind energy purposes can be found at: www.agf.gov.bc.ca/clad/tenure_programs/programs/windpower/index.html
- Ocean Renewable Energy Group www.oreg.ca
- Provincial Land and Resource Data Warehouse www.lrdw.ca



Note: The inset has been provided to illustrate the level of detail available in the data. The inset is for illustrative purposes only and does not imply any significance to this region.

BCMCA Atlas
Ocean Energy
Renewable Energy Tenures
and Transmission Line Tenures

Legend

Transmission Line Tenures

- Electrical Power Line
- Electrical Power Line - terrestrial portion
- Transmission Line (waterpower)
- Transmission Line (waterpower) - terrestrial portion

Wind Energy Tenures

- Investigative Permit
- Investigative Permit - terrestrial portion
- License of Occupation
- License of Occupation - terrestrial portion

Ocean Energy Tenures

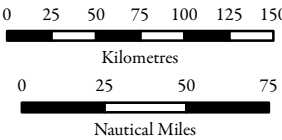
- Investigative Permit
- Licence of Occupation

Data Sources:
Province of British Columbia

Base Data:
ESRI Base Data, GeoBase, GeoBC, NOAA, Natural Resources Canada, USGS, Washington State Government

Thematic Data:
For more information on data sources and methods please refer to the facing page to this map

Projection: BC Albers NAD83



1:4,250,000 *

* Written scales are approximate and are based on a 11 x 17 inch paper size.

Prepared for:



Map template by Caslys Consulting Ltd.
April 19, 2013