

# Tenures – Utilities

## description

The management of Crown land and coastal and marine resources plays a pivotal role in expanding and diversifying the economy, sustaining the environment, and fostering the health and well-being of residents and communities in British Columbia. Crown land is typically, and most commonly, referenced in regards to the province’s terrestrial land base, and constitutes 94% of that land base, but it also applies to submerged lands (i.e., those lands covered by water) including tidal lands (i.e., the shoreline). Provincial Crown land includes the seabed floor of inland waters whereas the Federal Crown land extends over the seabed floor in offshore areas, as well as in designated ports and federal protected areas. The federal and provincial governments have not agreed where to place the boundary between inland and offshore areas, although there are agreements regarding jurisdiction in some areas (e.g., Strait of Georgia).

The tenure map series depicts provincial tenures only. Provincial agencies issue tenures for a variety of uses that may include everything from marine-based renewable energy development to commercial tenures for guide outfitters.

This atlas page depicts Crown land allocations for utilities that overlap with marine areas of BC as of October 2012. These include such uses as telecommunication lines, submerged power lines, sewer/effluent lines, oil and gas pipelines, water lines and transmission lines for waterpower generation. These utilities play a vital role in connecting remote island communities to the mainland by providing access to power grids and other services.

Forms of land allocation vary in the rights they grant and length of time they are typically issued for (see Crown Land allocation policy reference below). The types and number of land allocations related to utilities are detailed in Table 1.

Land Allocation Type		Number Issued
Tenure	Statutory right-of-way	667
	licence of occupation	179
	Right-of-way - Interim licence	18
	investigative permit	4
	standard lease	1
Reserves, withdrawals and transfers	map reserve	10
	notation of interest	5
	OIC Reserve	3

TABLE 1. CROWN LAND ALLOCATION RELATED TO UTILITIES



PHOTO: DAVE NICOLSON

## data sources

- Province of British Columbia, Integrated Land Management Bureau

## data resolution

- 1:20,000

## date compiled

- October 2012

## reviewers

- Not reviewed.

## reviewer comments

- None provided.

## caveats of use

- Tenures and other Crown land allocations are issued and expire over time; the latest release of this data from the BC Land and Resource Data Warehouse should be gathered before use.
- Recommended date of expiry for use of these data in a marine planning context: None provided.

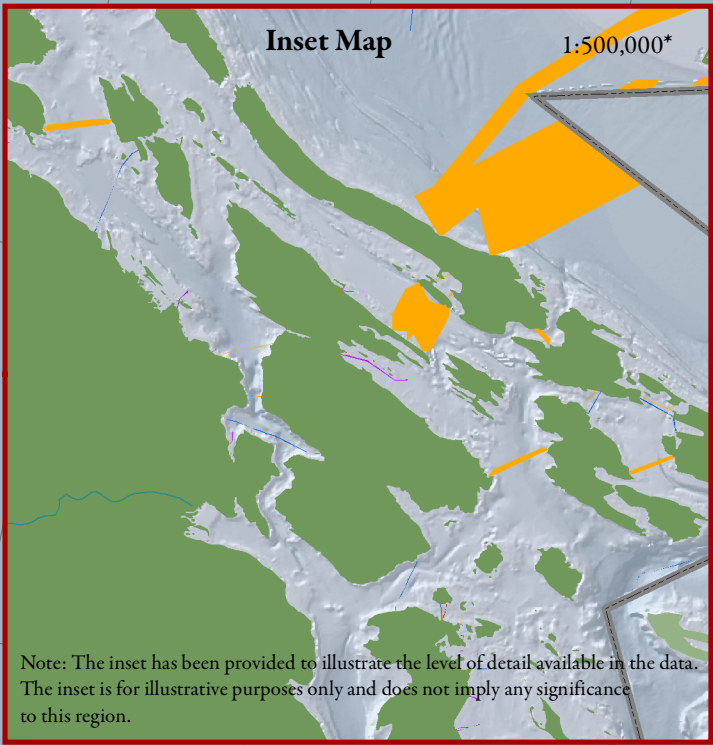
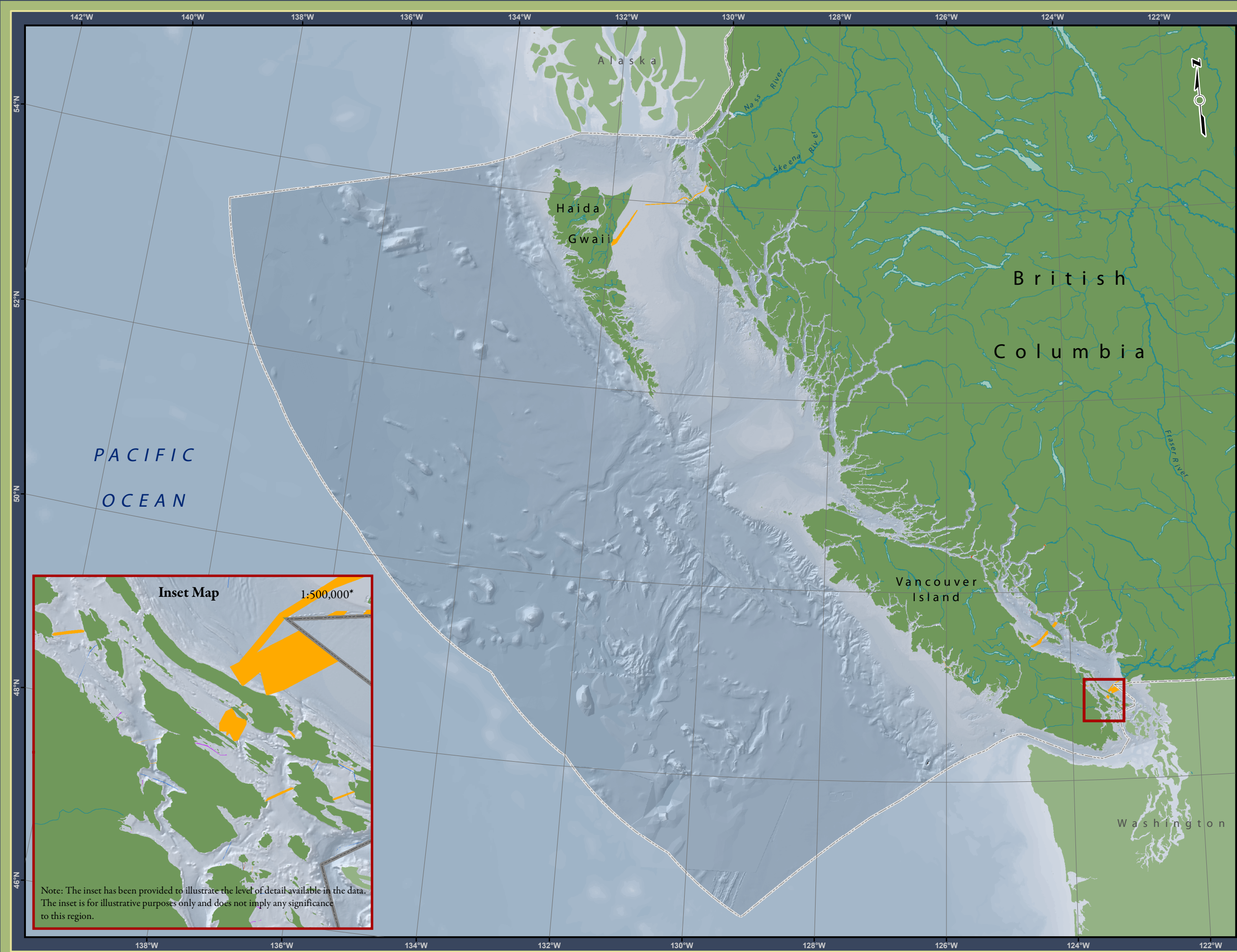
## map, feature data and metadata access

- Visit [www.bcmca.ca/data](http://www.bcmca.ca/data) for more information.

## references

- Crown Land Allocation policy is available at:  
[www.al.gov.bc.ca/clad/leg\\_policies/policies/crown\\_land\\_allocation.pdf](http://www.al.gov.bc.ca/clad/leg_policies/policies/crown_land_allocation.pdf)
- Information on provincial tenures issued for utilities is available at:  
[www.agf.gov.bc.ca/clad/tenure\\_programs/programs/utilities/index.html](http://www.agf.gov.bc.ca/clad/tenure_programs/programs/utilities/index.html)





## BCMCA Atlas

Tenures  
Utilities

### Legend

#### 2012 Tenures

- Cathodic Site/Anode Beds
- Electric Power Line
- Gas and Oil Pipeline
- Miscellaneous
- Sewer/Effluent Line
- Telecommunication Line
- Transmission Line (waterpower)
- Water Line

**Note:**  
- Tenures change over time. These tenures are current as of October 2012.

#### Data Sources:

Province of British Columbia

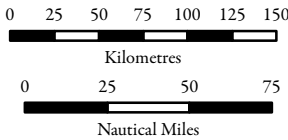
#### Base Data:

ESRI Base Data, GeoBase, GeoBC, NOAA, Natural Resources Canada, USGS, Washington State Government

#### Thematic Data:

For more information on data sources and methods please refer to the facing page to this map

**Projection:** BC Albers NAD83



1:4,250,000 \*

\* Written scales are approximate and are based on a 11 x 17 inch paper size.

Prepared for:



Map template by Caslys Consulting Ltd.  
December 7, 2012